



**Emergency Preparedness and Business Continuity
Conference 2015**
November 18, 2015

Presenter: Clarence Lai, Senior Project Manager



1

Focus of today

- 1) Understand the role of IPREM
- 2) Recognize the importance on IPREM's Regional Concept of Operations model during regional emergency events
- 3) Explore emergency communications and some of its building blocks (*Presenter – Chad Pacholik*)



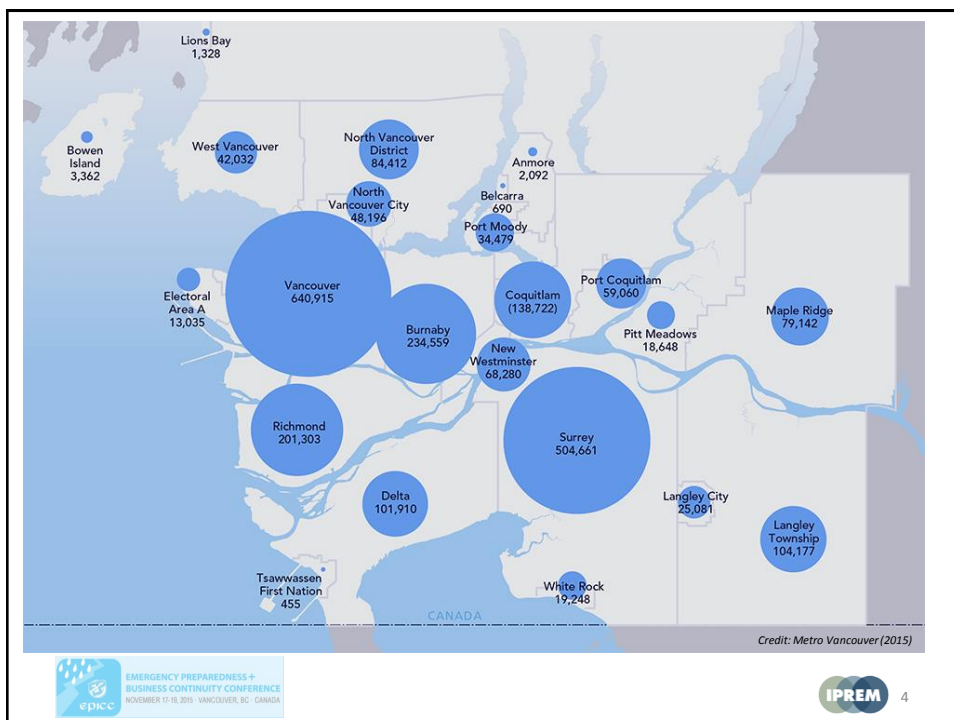
2

IPREM OVERVIEW

- ❑ Metro Vancouver region
- ❑ The Partnership
- ❑ Role in regional emergency management

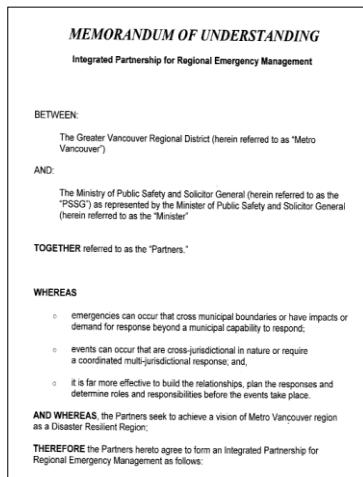


3



4

The Partnership



- Integrated Partnership for Regional Emergency Management (IPREM)
- Partnership between the Province of BC and Metro Vancouver member municipalities for regional emergency planning
- Established through a MOU (2009) to improve emergency management across Metro Vancouver region
- Jointly funded (50/50) between the partners where each contributes \$150,000 annually
- Website: <http://www.iprem.ca>



Role in emergency management

Current Role:

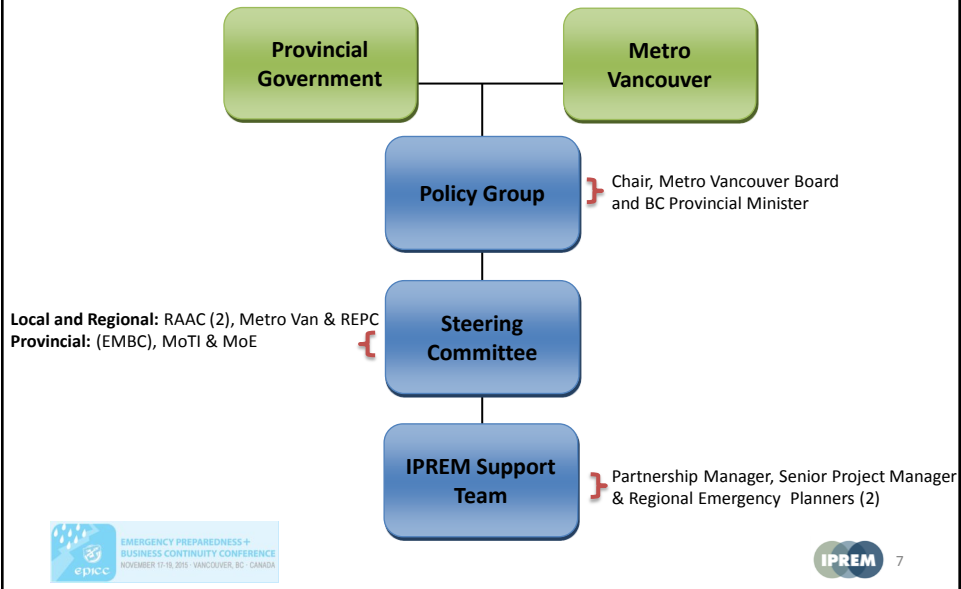
- Improve regional emergency management in the Metro Vancouver region through continued and increased provincial and regional cooperation
- To provide sub-regional and regional emergency planning for major events, which are, or have the potential to be, cross jurisdictional in nature
- IPREM **does not** have an operational role during an emergency

Current Projects:

- **Regional Concept of Operations (Model)**
- Regional Emergency Communications Strategy



Governance structure



ALL HAZARD INTEGRATED REGIONAL CONCEPT OF OPERATIONS MODEL

- ☐ Model overview
- ☐ Metro Vancouver Regional Emergency Advisory Group
- ☐ Value to the region

Definition: Event of Regional Emergency Significance

A major event that has (or has the potential to have) an extraordinary level of risk to lives, property, environment, social and/or economic wellbeing across jurisdictional boundaries in the region, which could require one or more of the following:

- Non routine levels of coordination
- Sharing of situational awareness information
- Joint decision making
- Prioritizing resources
- Allocating resources
- Response by multiple stakeholders (agencies and jurisdictions)



Regional Concept of Operations (Model)

Purpose:

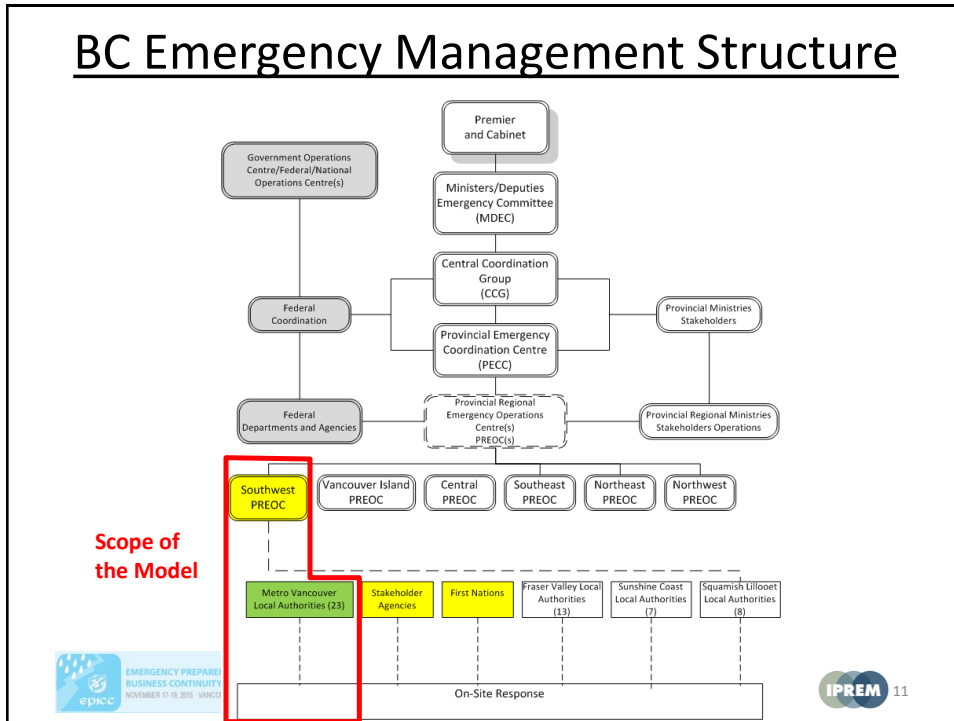
- Collectively agree on how local authorities will share information, collaborate on decisions and coordinate resources during regional emergencies

Background:

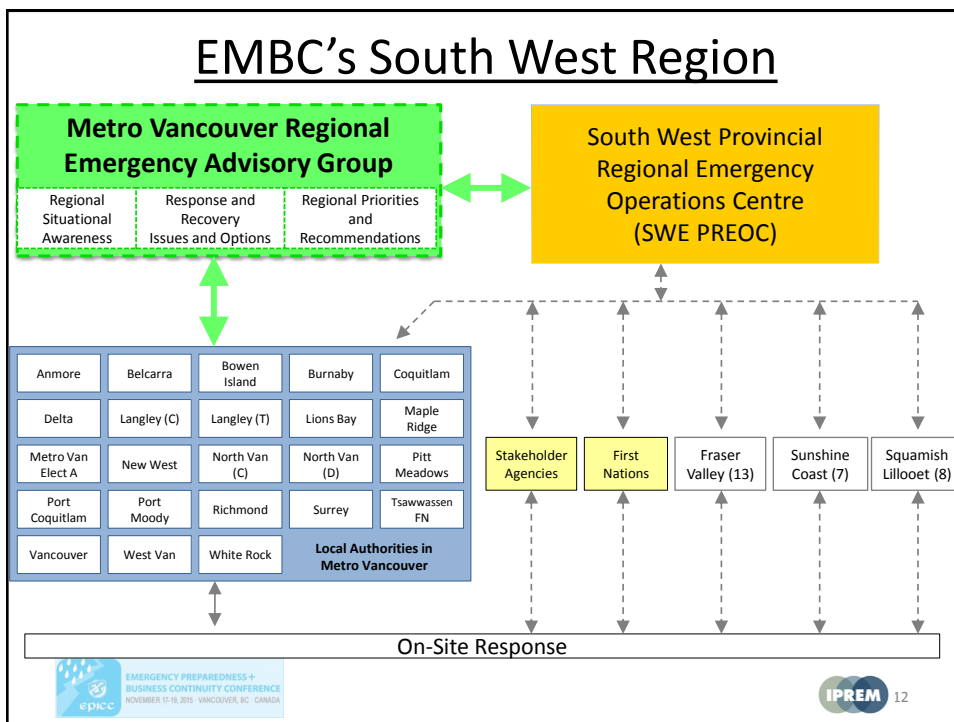
- Tabletop Exercise confirmed regional gap in 2012
- Working group established (led by seven Chief Administrative Officers (CAOs))
- Developed and tested Model over three years
- Utilize the Model during the next regional emergency event that involves regional issues or requirement for critical information sharing to be used in a real time emergency event (Approved on Sep 2015)



BC Emergency Management Structure



EMBC's South West Region

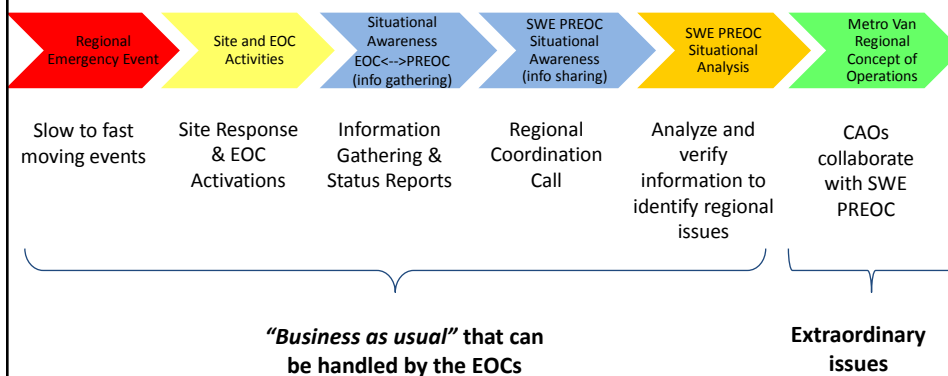


Guiding Principles

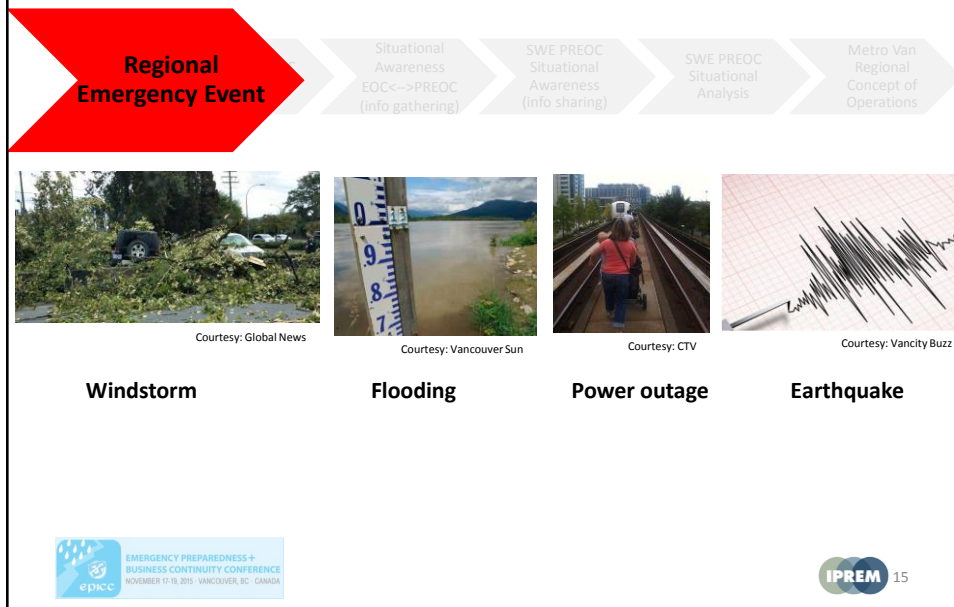
- 1) **Local Authorities maintain autonomy**
- 2) **Utilize existing structures to achieve regional coordination**
- 3) Utilize existing resources
- 4) Pro-active leadership
- 5) **Scalable, flexible and layered approach**
- 6) Model(s) focus on process(es) to determine outcomes
- 7) Local Authorities' commitment
- 8) Collaborative decision making
- 9) Preparedness, training and exercises



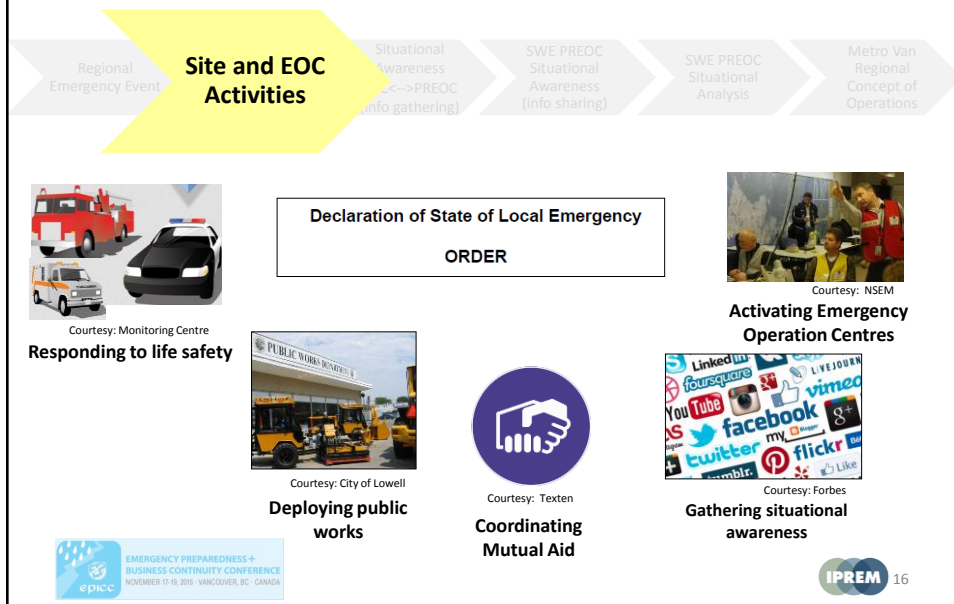
How the Model interfaces with the SWE PREOC



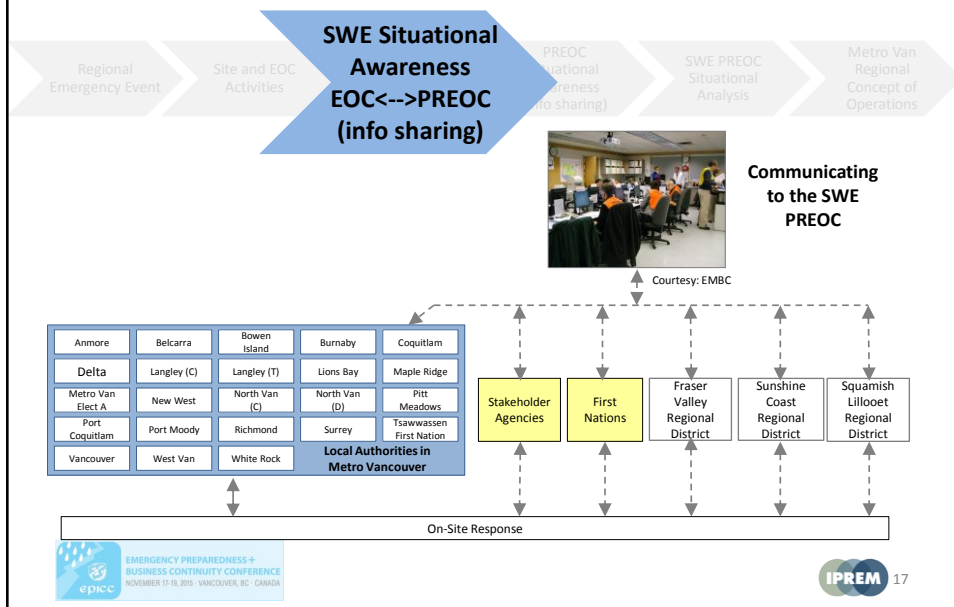
How the Model interfaces with the SWE PREOC



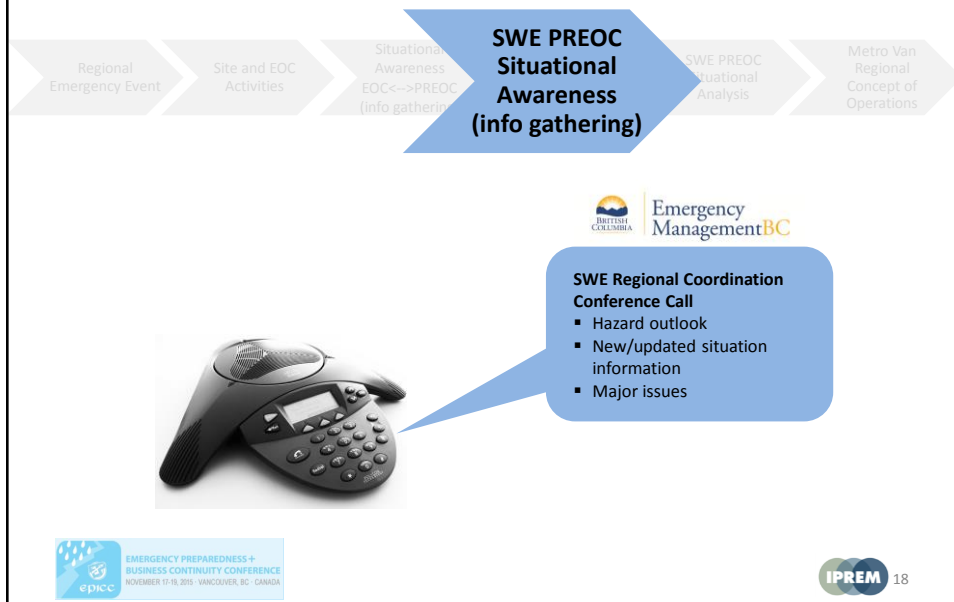
How the Model interfaces with the SWE PREOC



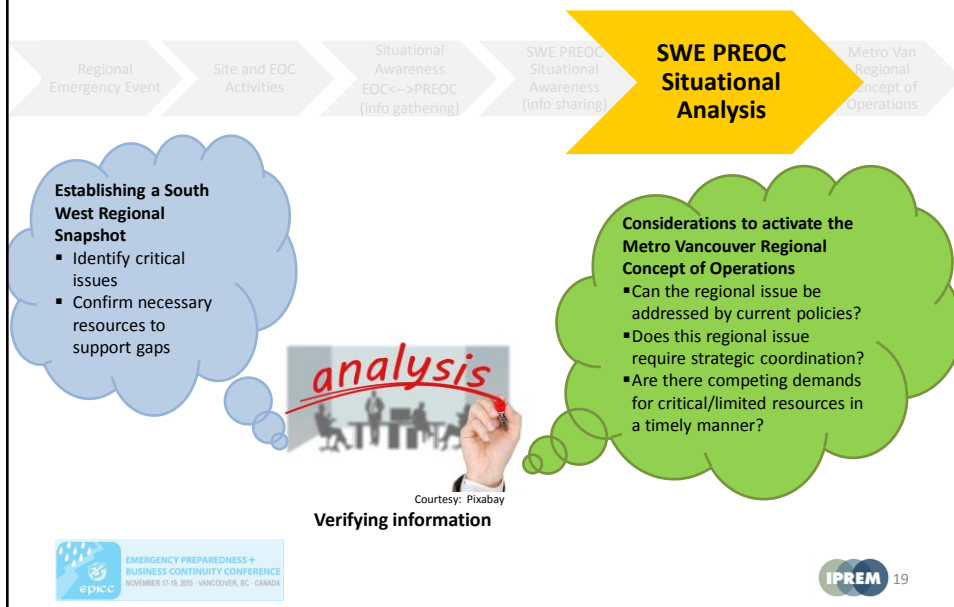
How the Model interfaces with the SWE PREOC



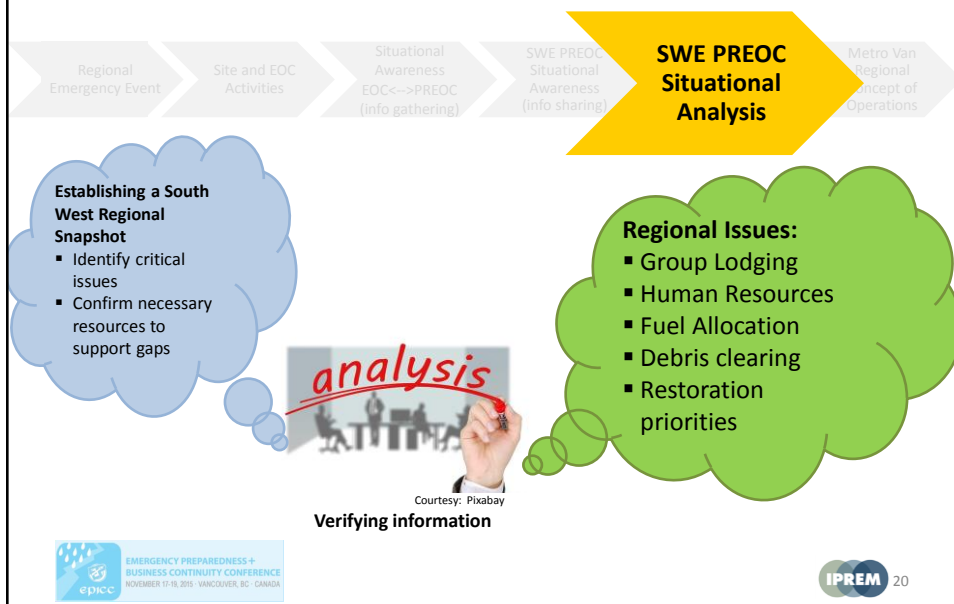
How the Model interfaces with the SWE PREOC



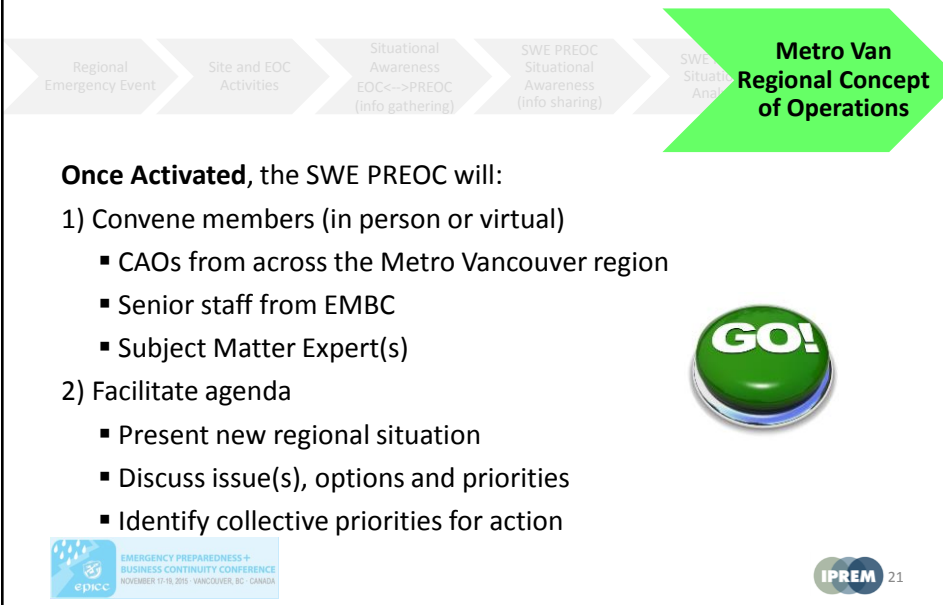
How the Model interfaces with the SWE PREOC



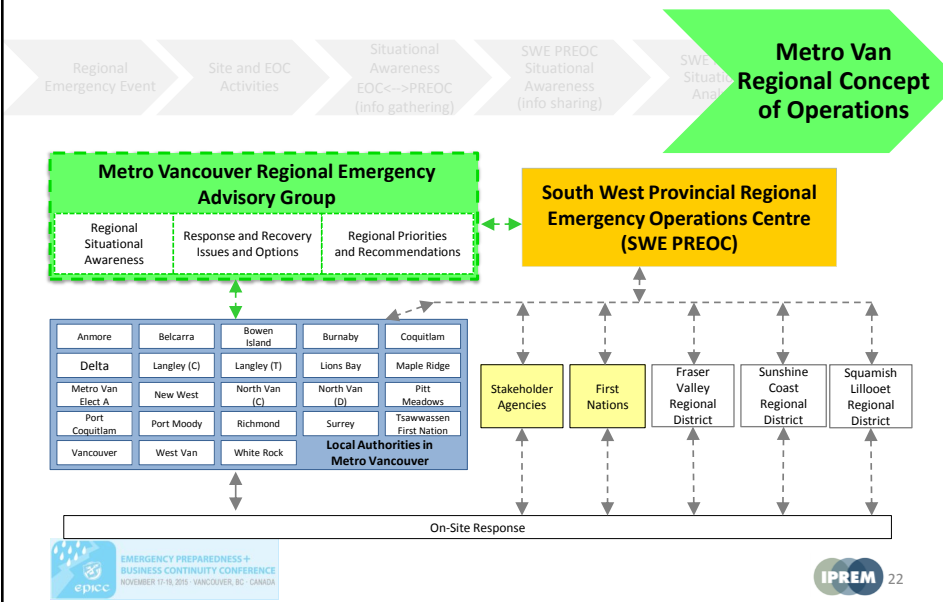
How the Model interfaces with the SWE PREOC

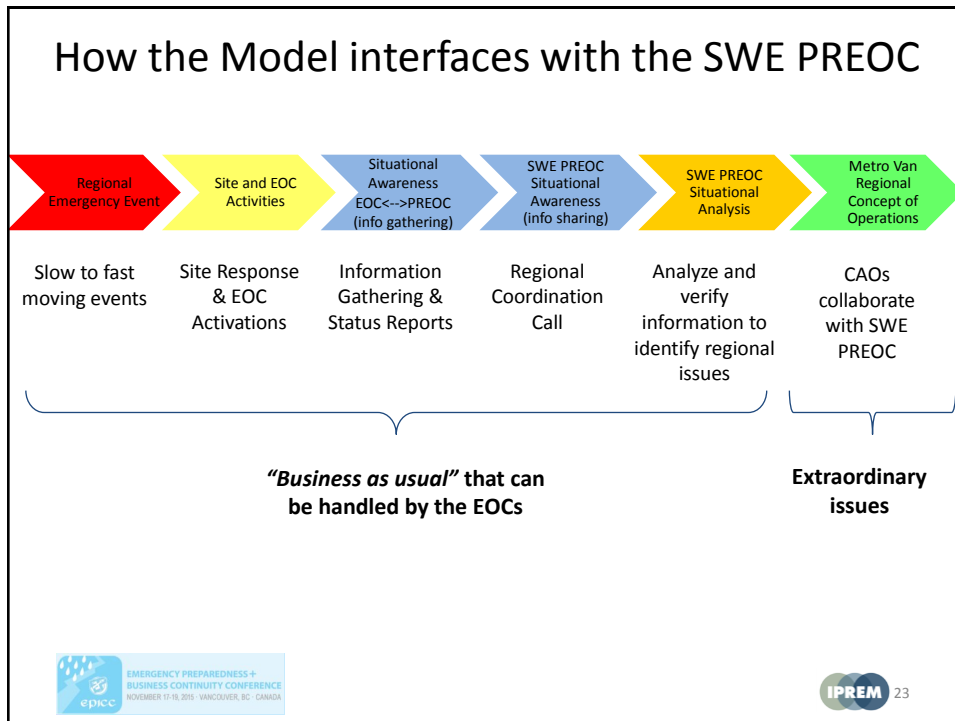


How the Model interfaces with the SWE PREOC



How the Model interfaces with the SWE PREOC





Context on the Model

What is the model?

- Collectively agree on how local authorities will share information, collaborate on decisions and coordinate resources during regional emergencies

Why is it needed and only focused in the Metro Van region?

- Absence of a regional voice in the province's decision making process (identified by the CAOs within Metro Vancouver region)
- IPREM's MOU outlines member municipalities within the Metro Vancouver

Who are the members?

- Metro Van Regional Emergency Advisory Group (23 CAOs and EMBC Senior staff, and Subject Matter Experts as required) – **Not "wearing their EOC Director hats"**

EMERGENCY PREPAREDNESS+ BUSINESS CONTINUITY CONFERENCE
NOVEMBER 11-18, 2015 - VANCOUVER, BC - CANADA

IPREM 24

Context on the Model

When does it get activated?

- Event crosses or has the potential to cross jurisdictional boundaries
- Event can have a negative impact or heightened risk to other jurisdictions
- Competing demands for critical/limited resources in a timely manner
- **Can be activated by either CAO(s) or SWE PREOC**

Where do the outcomes from this model go to?

- Input into the SWE PREOC decision making process

How will members convene?

- In person, virtual or a combination of both



Value of the Model

- Enhanced CAO engagement in emergency management
- Learning about regional capabilities and capacity—highlighting regional gaps
- Identification of regional issues and working towards established policies
- Regional collaboration and coordination – effective and efficient decision making



Closing

IPREM:

- Planning arm for regional emergency management for the Metro Vancouver region
- Partnership between the Province of BC and Metro Vancouver

Regional Concept of Operations:

- First model in BC (potentially nationally)
- Established Metro Van REAG (CAOs and Senior EMBC staff)
- Flexible to meet in person or participate virtually
- Address regional issues that are extraordinary
- Model is ready to be used



Questions?

Project: Regional
Concept of Operations

Clarence Lai

Senior Project Manager

E: Clarence.Lai@gov.bc.ca

T: (604) 586-4341



What is interoperability?

Is the ability of a system or a product to work with other systems or products without special effort on the part of the customer.

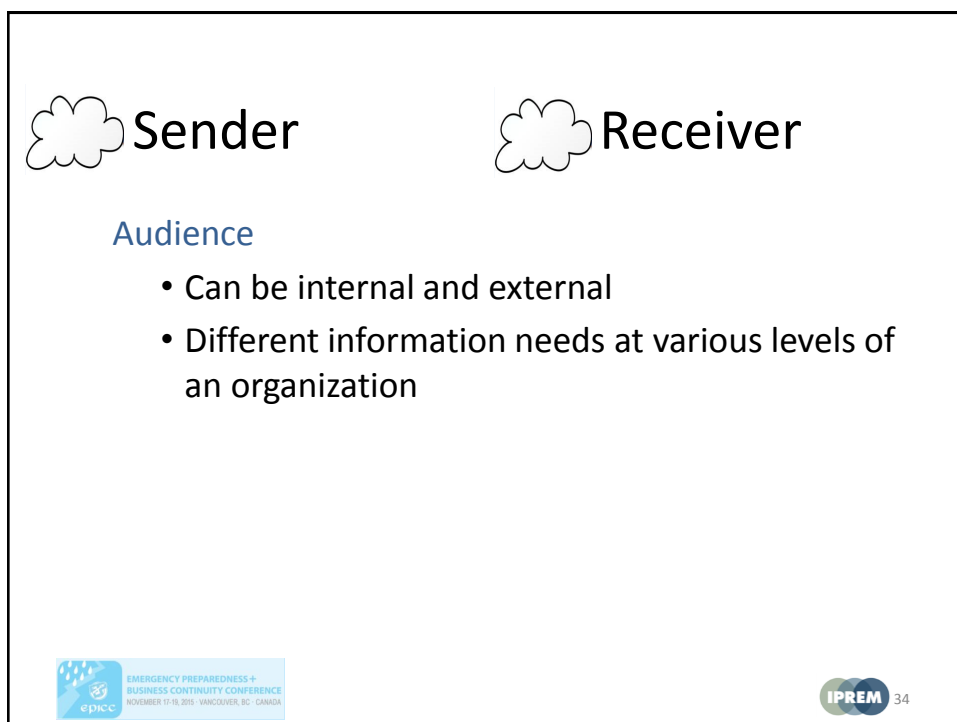
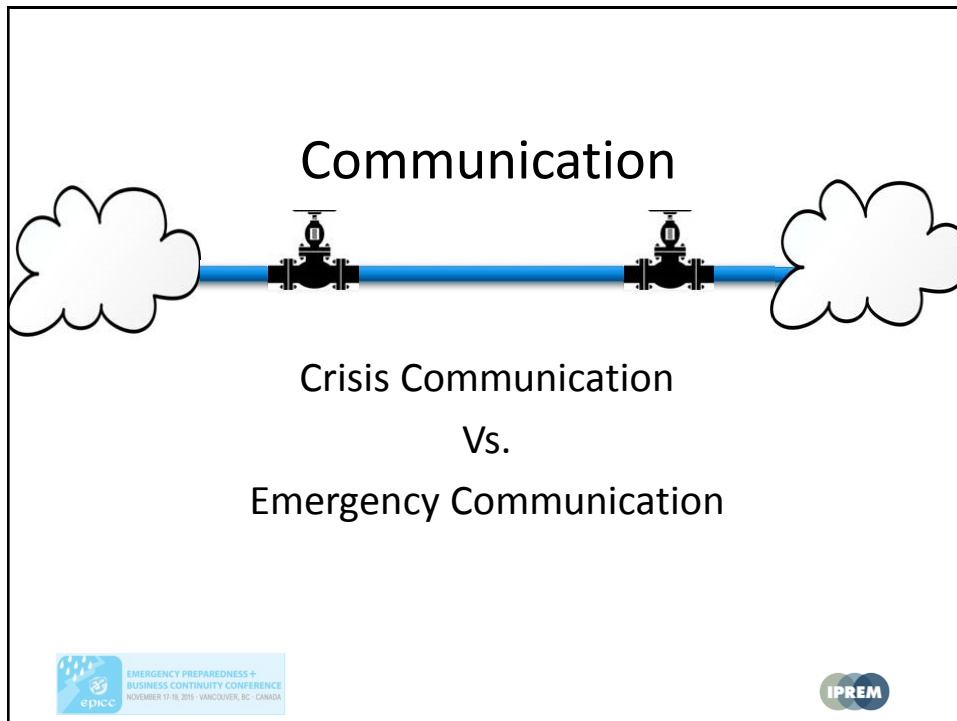


What is interoperability?

The ability of emergency personnel to communicate between jurisdictions, disciplines, and levels of government, using a variety of systems, as needed and as authorized.

(Communications Interoperability Strategy for Canada)





Means of Transmission

A pipeline between the sender and receiver

How will communication occur?

- In person
- By email
- By phone
- By radio



Control mechanisms

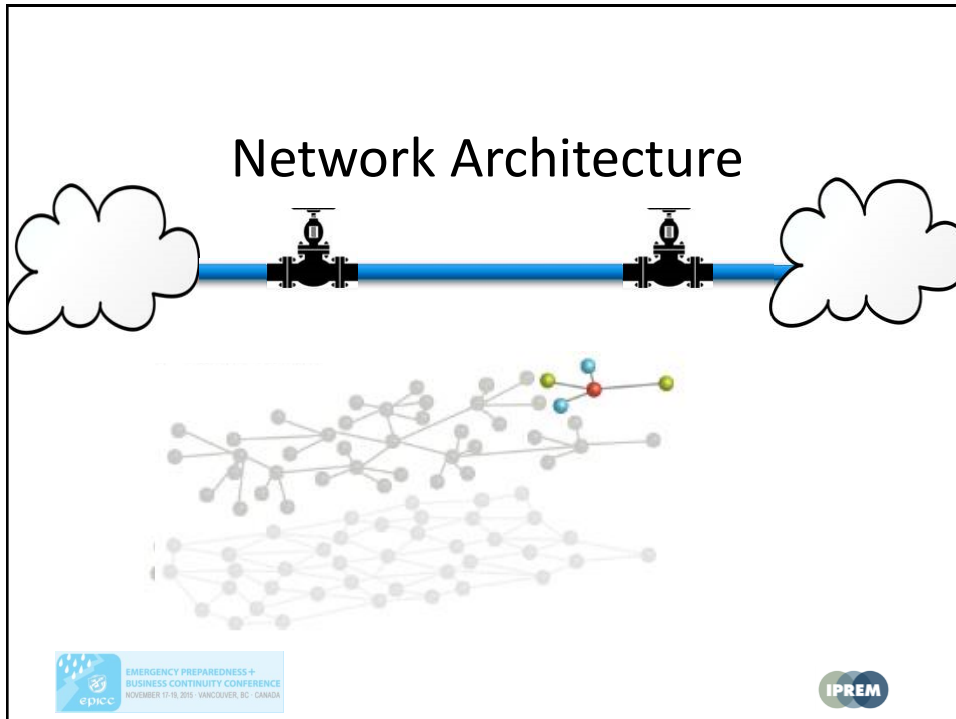
Procedures

- When to send? who to send to?
- When to receive? who to receive from?
- Templates
- Software

Training/Exercise

- Familiarity
- Understanding
- Practice





Message

- **What** are we sending?
- **What** are we receiving?
- **What** level of detail is required?

Why?

What's in a message?

Data

- “Raw facts”
- W5 questions

Example

- Number of people evacuated

Information

- Analysis of “raw facts”
- So What?

Example

- Percentage of the population
- Capacity to support evacuees



Critical Information Requirements

- What data do you need?
- What information do you need?
- What level of detail is required
- Why is it being sent?
- How will it be used?

Communication: Coming and Going

Collection plan

- Where will you get your data/information from?
- Confirm their expectations
- Confirm their ability to provide that information

Distribution plan

- Where will you send data/information to?
- Confirm expectations
- Confirm your ability to provide that information



Problems with Data

- Void

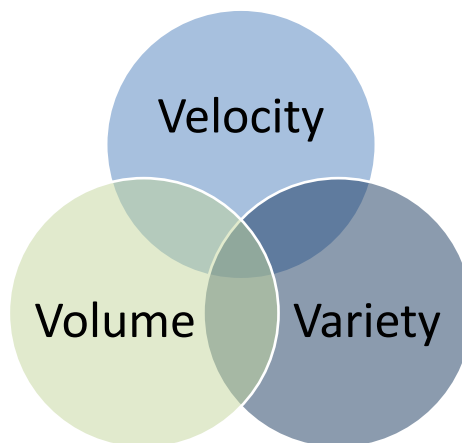


Problems with Data

- Tsunami



Problems with Data



Challenges

- Unclear information needs
- Differing expectations
- Information Tsunami (Velocity, Volume and Variety)
- Chicken and Egg quandaries
- Organizational Culture(s)
- Focus on technology
- Focus on Governance
- Fear of large capital expenses



(A selection of) Successes

Ontario Interoperability Task Group: OASIS tool

California EMO: Incident Rating Matrix

Puget Sound Region: Situational Status and Medical Surge Support Tool

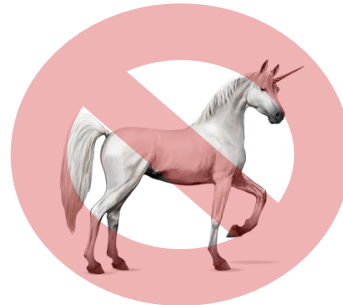
Digital Humanitarian Network: Decision Makers Needs

E-Comm: Combined Events Channels

IPREM: Regional Emergency Communications Strategy



Is Interoperability an Elusive Unicorn?



“The true goals of interoperability are shared information and ultimately shared understanding.”

“The importance of interoperability is not at the connectivity of systems... rather, its importance is manifested at the information and cognitive levels.”

What can you do?

- **Set goals**
 - What capacities do you want to have?
 - By when?
- **Build time into your work plan for emergency communications/interoperability**
 - It will never get done if you do not allocate time for it
- **Define your Critical Information Requirements**
 - Identify and confirm the sources of your CIRs
 - Identify what level of detail is required by you and of you
- **Train and Educate yourself and your staff**
 - If you don't use it you lose it!



Questions?

Project: Regional
Communications Strategy

Clarence Lai
Senior Project Manager
E: Clarence.Lai@gov.bc.ca
T: (604) 586-4341

