

Panel Discussion: Regional Partnerships – A Collaborative Discussion

Panel Speakers:

- *Denise Barrett, Manager, Regional Disaster Preparedness Organization*
- *Robert Lapham, Chief Administrative Officer, Capital Regional District, and Local-Co-Chair, Regional Emergency Management Partnership*
- *Ian Cunnings, Senior Regional Manager, Emergency Management BC, and member of the IPREM Steering Committee*

Moderator:

- *Clarence Lai, Senior Project Manager, IPREM*

November 9, 2016



**Regional Emergency
Management Partnership for
the Capital Regional District**



Overview of the Session

Time	Agenda
10:30	Introduction <ul style="list-style-type: none">- Overview of the session
10:35	Overview of the Partnerships <ul style="list-style-type: none">a) Regional Disaster Preparedness Organization (RDPO)b) Integrated Partnership for Regional Emergency Management (IPREM)c) Regional Emergency Management Partnership (REMP)
10:45	Panel Discussion <ul style="list-style-type: none">- A collaborative discussion
11:45	Question and Answer Period <ul style="list-style-type: none">- Opportunity for Audience to ask questions
11:55	Closing <ul style="list-style-type: none">- Summary of the session
Noon	Adjournment

Regional Disaster Preparedness Organization

Vision: To create a secure and disaster-resilient region in which local agencies, organizations, and communities are coordinated and prepared to prevent, protect against, mitigate, respond to and recover from threats and hazards of great risk to the Portland Metropolitan Region



Regional Disaster Preparedness Organization

Historical Review

- ❑ **1993** – Regional Emergency Management Group
- ❑ **2003** – Urban Areas Security Initiative Grant
- ❑ **2008 – 2009** - Visioning that led to the RDPO model
- ❑ **2012** – RDPO implementation begins
- ❑ **2013** – RDPO Strategic Priorities Document (3 yrs)
- ❑ **2015** – Formal Intergovernmental Agreement/Local Cost Share Methodology

Regional Disaster Preparedness Organization

☐ **Purpose:**

- Develop and implement focused program strategy for building resilience in the region

☐ **Governance and Membership:**

- Multi-tiered structure; public, private and non-profit sector participation; membership categories (different voting rights)

☐ **Uniqueness:**

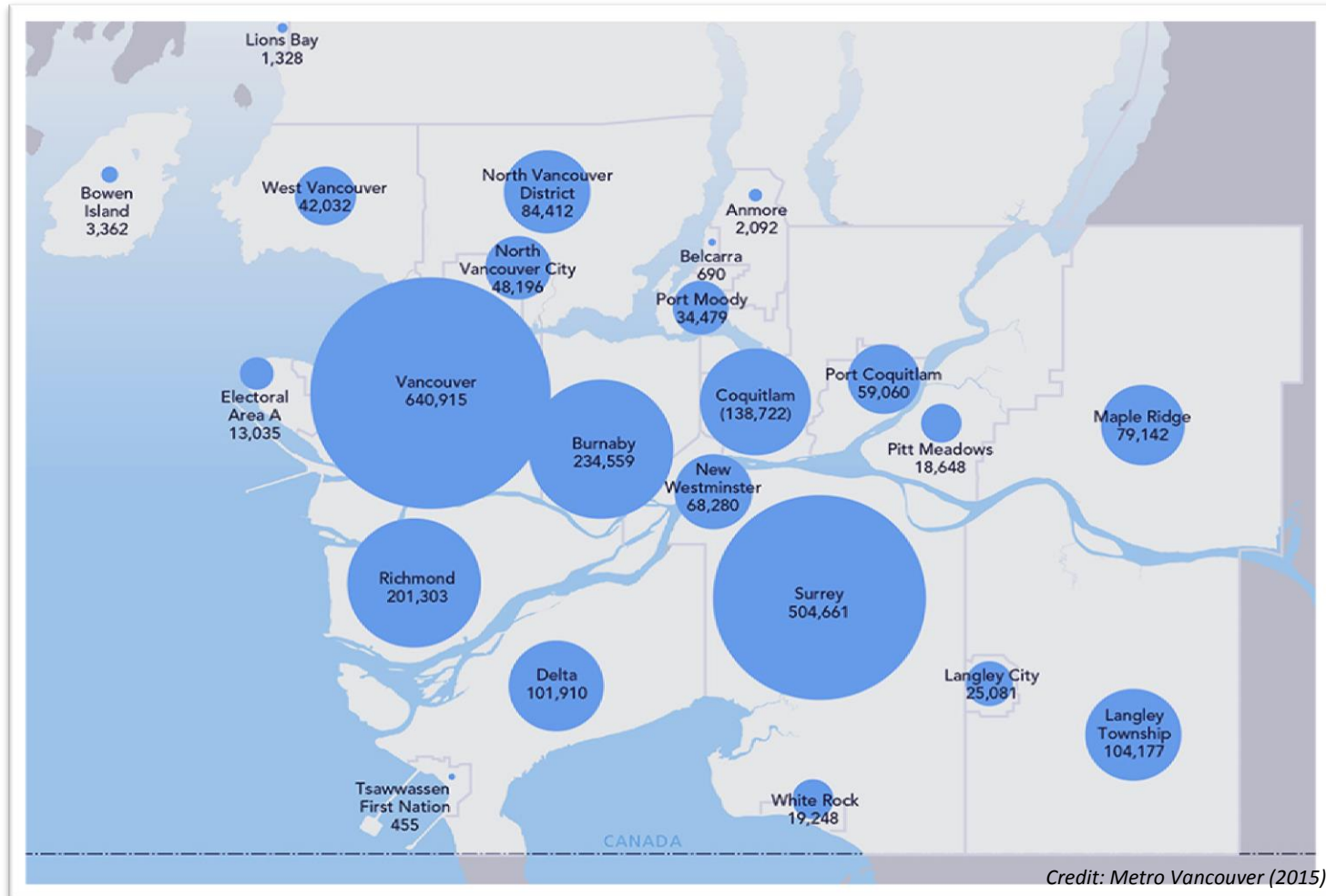
- All hazards (five mission areas); sustainability through core group local cost sharing; legislative agenda; consensus-driven

☐ **Your role within the Partnership:**

- Organizational architect and process facilitator (ship's captain)

Integrated Partnership for Regional Emergency Management

Vision: A disaster resilient region



Joint Emergency Liaison Committee (JELC)

- ❑ Municipalities identified a gap
- ❑ Established in 1995
- ❑ Contractor supported model
 - Cooperative and collaborative model
 - Research committees
 - Implementation of working groups

Integrated Partnership for Regional Emergency Management

☐ Purpose:

- Coordinate regional and sub regional emergency management planning within the Metro Vancouver region

☐ Governance and Membership:

- Policy Group and an eight member Steering Committee equally represented by local/regional governments and provincial government

☐ Uniqueness:

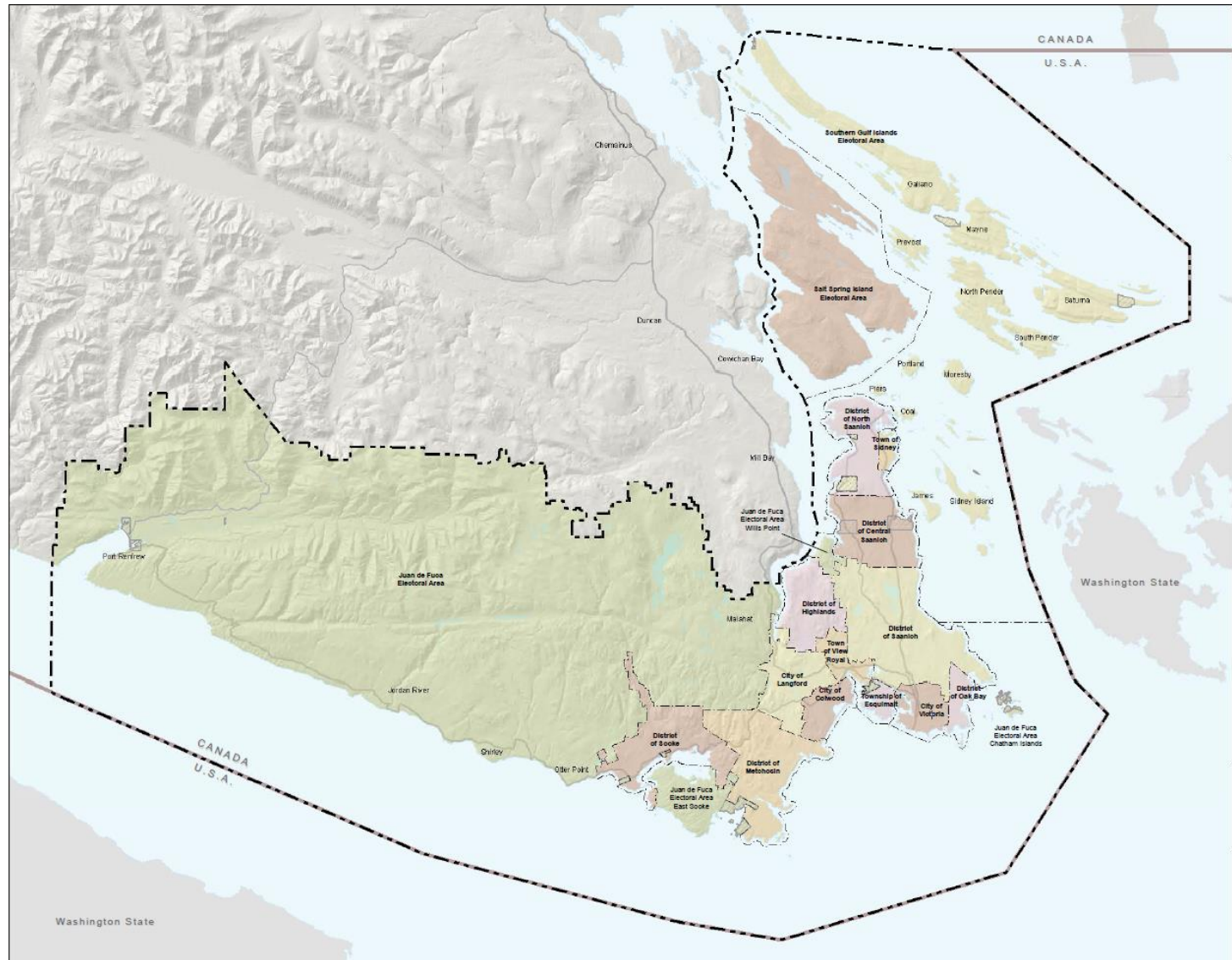
- 21 municipalities, one Treaty First Nation and one Electoral Area
- Majority of the population in BC

☐ Your role within the Partnership:

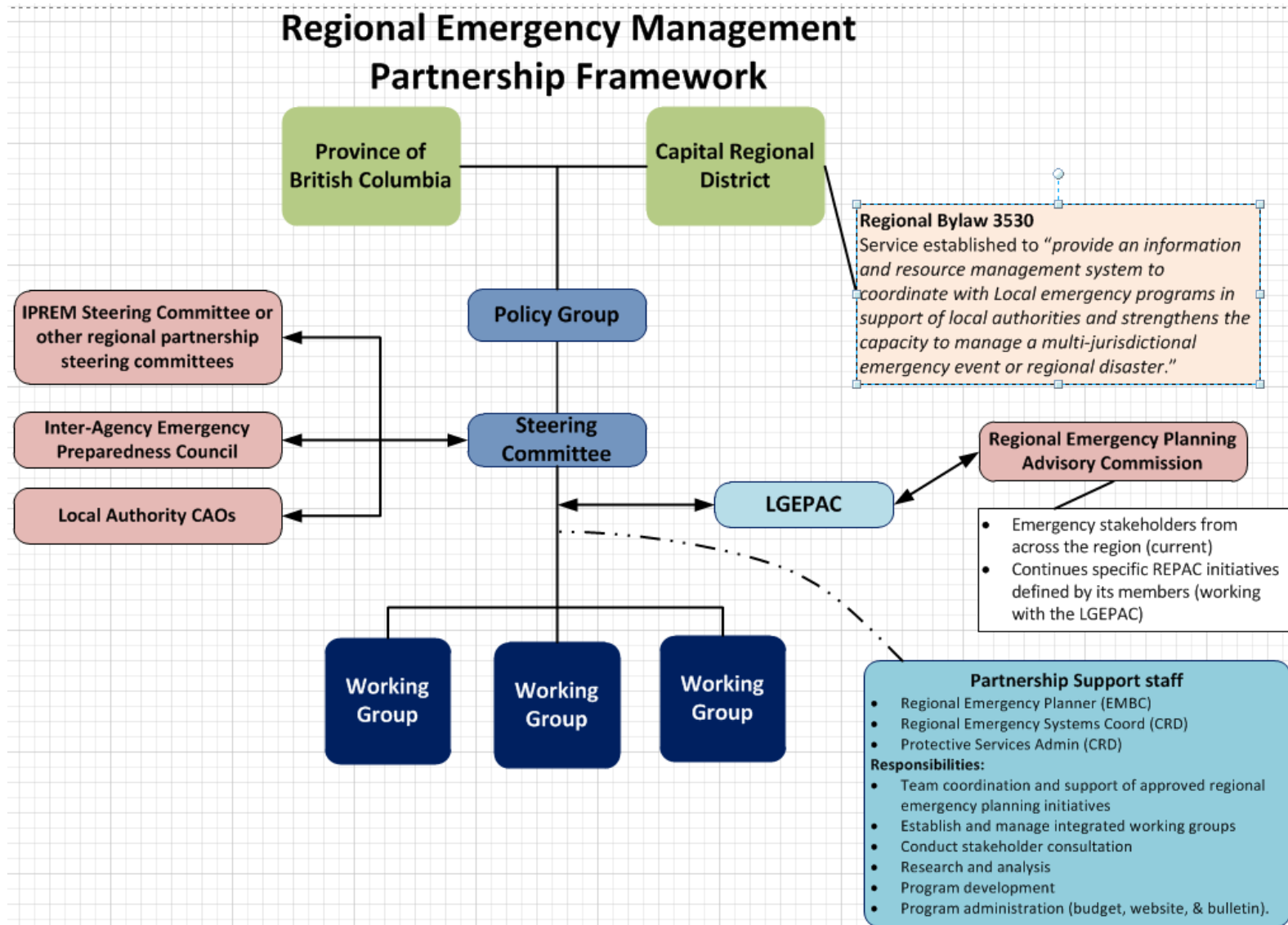
- *Providing an operational lens with a focus for assigning regional support to the IPREM projects*

- ☐ Established by a Memorandum of Understanding signed in April 2009

Regional Emergency Management Partnership



Regional Emergency Management Partnership



Regional Emergency Management Partnership

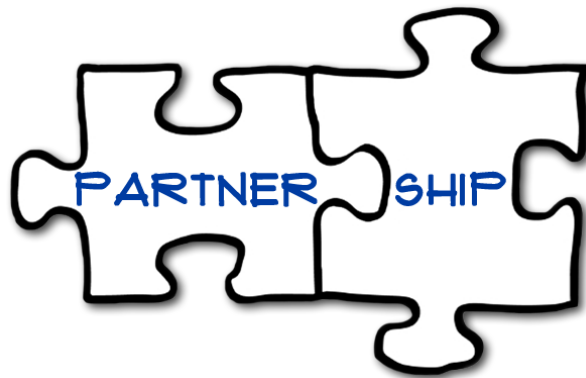
- ☐ Background, Community Emergency Program voluntary establishment in the late 1970s
- ☐ CRD support for Electoral Areas formalized in 2000
- ☐ CRD support for an integrated approach with the EAs and Corporate Services in 2006
- ☐ Regional Emergency Program Advisory Commission (REPAC), operating in various forms since the late 1990s
- ☐ Local Government Emergency Program Advisory Commission (LGEPAC), established in August 2008

Regional Emergency Management Partnership

- ❑ **Purpose:** *“to establish the Regional Emergency Management Partnership (REMP), a local/regional/provincial partnership, that will enhance regional emergency management and disaster resilience across the CRD and to ensure collaboration between government, local authorities and stakeholders during a regional emergency.”*
- ❑ **Governance** through an MOU, Policy Group and Steering Committee
- ❑ **Membership** is comprised of the Province of BC, Capital Regional District, 13 Municipalities and 3 Electoral Areas, First Nations and Stakeholders
- ❑ **Uniqueness:** Island Communities, 13 Municipalities, 3 Electoral Areas, 9 First Nations, Provincial Capital and Legislature, Canadian Forces Base Esquimalt home of Canada’s Pacific Fleet. A mix of urban, suburban, rural and forest lands.
- ❑ **Role within the Partnership:** To support the Partnership and work cooperatively and collaboratively to help all participants achieve success through common projects as designated by the Steering Committee and approved by the Policy Group
- ❑ Established by Memorandum of Understanding signed March 2016

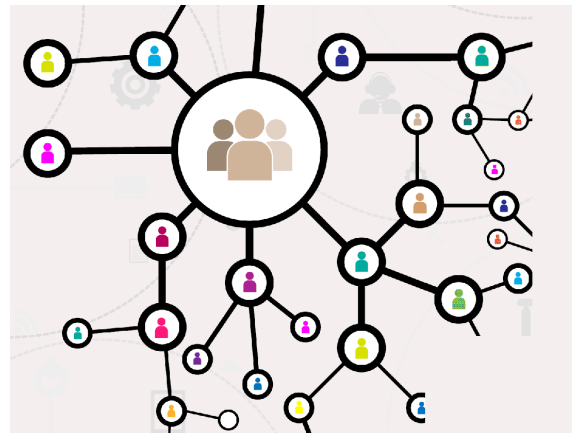
Panel Question #1

What were the drivers to form the partnership?



Panel Question #2

What are some considerations to maximize collaboration and engagement with partners and stakeholders?



Panel Question #3

What is the value of the partnership and how do you show it?



Panel Question #4

How do you manage stakeholder and partner expectations?



Question and Answer Period

- 1) What were the drivers to form the partnership?
- 2) What are some considerations to maximize collaboration and engagement with partners and stakeholders?
- 3) What is the value of the partnership and how do you show it?
- 4) How do you manage stakeholder and partner expectations?

Questions for the Audience

- Does anyone have an example where regional emergency planning has/could have been beneficial?
- Could you see a benefit for regional emergency management planning in your area?

Contacts

Regional Disaster Preparedness Organization

- *Denise Barrett, Manager, (Denise.Barrett@portlandoregon.gov)*

Regional Emergency Management Partnership in the Capital Regional District

- *Ian Elliott, Regional Emergency Systems Coordinator, (Ian.Elliott@crd.bc.ca)*
- *Brittany Schina, Senior Project Manager, (Brittany.Schina@gov.bc.ca)*

Emergency Management BC, Province of BC

- *Ian Cunnings, Senior Regional Manager, (Ian.Cunnings@gov.bc.ca)*

Integrated Partnership for Regional Emergency Management in Metro Vancouver

- *Clarence Lai, Senior Project Manager, (Clarence.Lai@gov.bc.ca)*



**Regional Emergency
Management Partnership for
the Capital Regional District**

